

Technical Analysis Report

KSE 100 Index			
Support		Resistance	
S1	112,320.90	R1	118,600.04
S2	111,250.40	R2	117,891.04
S3	110,000.01	R3	117,623.03

Indicator	Reading
14 – Day RSI	40
Stochastic Oscillator	20

Moving AVG	Reading
20 – DMA	113,880.80
50 – DMA	108,947.68
100 – DMA	100,758.06
200 – DMA	89,674.50

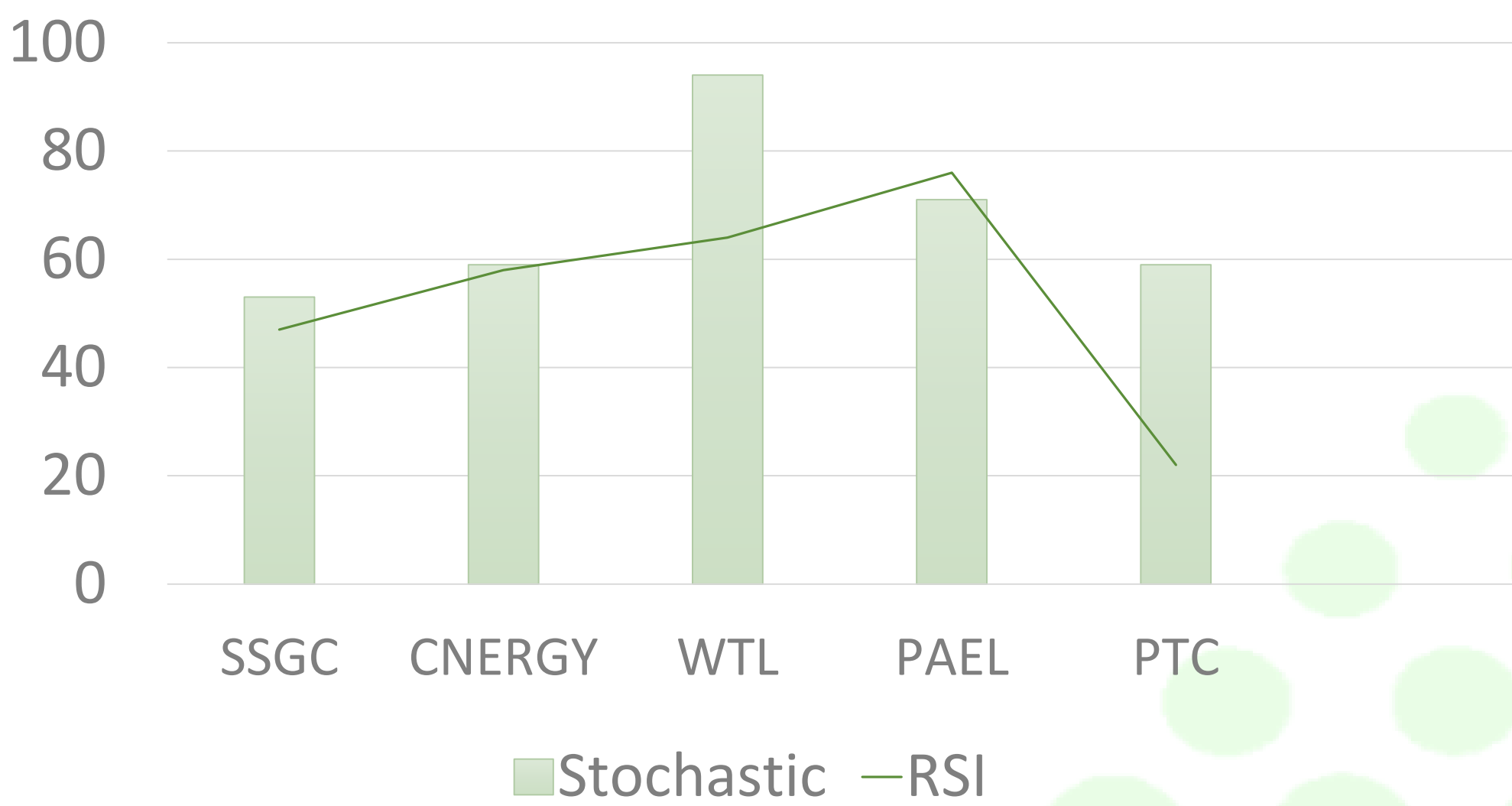
Market at a Glance			
Open	115,075.86	Close	113,520.3
High	115,596.87	Change	(-1.18%)
Low	113,482.22	Volume	231,004,228



Strategy:

KSE-100 INDEX : Selling pressure was observed at the Pakistan Stock Exchange (PSX) as investors awaited the Monetary Policy Committee (MPC) decision later today. The benchmark KSE-100 Index lowered over 1,100 points during intra-day trading on Monday. At 2:50pm, the benchmark index was hovering at 113,761.54, a decrease of 1,118.94 points or 0.97%. Selling was seen across key sectors, including automobile assemblers, cement, chemical, commercial banks, oil and gas exploration companies, OMCs, refineries and power generation. Index-heavy stocks including HUBCO, SNGP, SSGC, MARI, OGDC, PPL, MCB, MEBL and UBL traded in the red. “Key event today is the MPC, for which market consensus is a 100bps cut to a policy rate of 12%”.

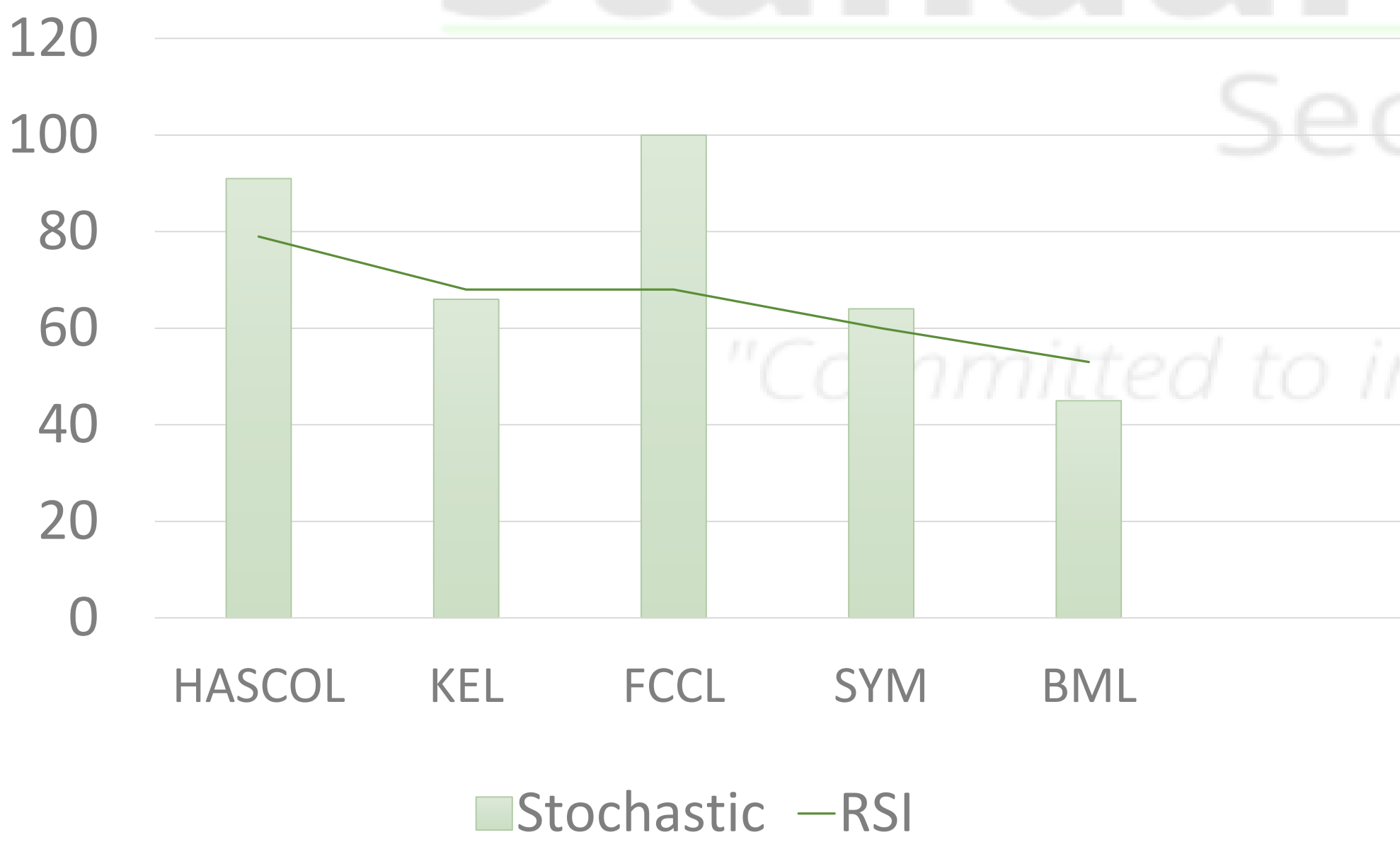
RSI and Stochastic Indicators



Volume Leaders

Symbol	Close	Change	Volume
SSGC	39.53	(-9.99%)	51,598,559
CENERGY	7.55	(-2.07%)	50,397,574
WTL	1.73	(-3.35%)	28,997,927
PAEL	41.9	(1.50%)	22,765,045
PTC	25.52	(3.32%)	18,272,183
HASCOL	12.94	(-0.08%)	16,906,275
KEL	4.54	(-2.37%)	14,698,083
FCCL	39.57	(-1.22%)	14,387,642
SYM	19.59	(3.21%)	12,889,017
BML	3.44	(4.88%)	12,705,887

RSI and Stochastic Indicators



Standard Capital Securities | Technical Desk

UAN: 021-111-111-721

info@scstrade.com

WWW.SCSTRADE.COM

Most Active in Market													
SYMBOL	COMPANY NAME	CLOSE	MACD DAILY	MACD WEEKLY	RSI DAILY	SUP 1	SUP 2	RES 1	RES 2	SMA 60	SMA 200	52 WK HIGH	52 WK LOW
ATRL	Attock Refinery Ltd. ...	632.65	Sell	Sell	48.18	624.23	615.82	640.03	647.42	588.36	433.07	775.75	285.11
DGKC	D. G. Khan Cement Co...	108.69	Buy	Buy	59.62	107.43	106.16	110.53	112.36	96.04	86.47	112.39	61.80
LUCK	Lucky Cement Ltd. Con...	1,109.15	Sell	Sell	49.13	1,099.83	1,090.52	1,124.23	1,139.32	1,087.06	938.06	1,283.84	693.80
NRL	National Refinery Ltd. ...	261.80	Sell	Sell	41.41	258.41	255.01	267.30	272.79	266.10	256.16	341.50	198.00
OGDC	Oil & Gas Development...	212.43	Sell	Sell	45.74	210.65	208.88	215.35	218.28	206.72	159.53	255.40	104.50
POL	Pakistan Oilfields Ltd. ...	631.37	Sell	Sell	51.80	625.95	620.52	635.90	640.42	610.21	559.23	699.00	403.00
PPL	Pakistan Petroleum Ltd.	181.46	Sell	Sell	43.66	179.94	178.42	184.04	186.62	176.62	135.67	216.50	94.00
PSO	Pakistan State Oil Com...	385.03	Sell	Sell	49.88	380.02	375.01	392.02	399.01	337.83	222.96	465.00	137.00
SNGP	Sui Northern Gas Pipeli...	99.60	Sell	Sell	50.32	95.78	91.97	103.13	106.67	95.20	75.87	115.75	57.53
SSGC	Sui Southern Gas Com...	43.92	Sell	Sell	56.79	41.51	39.10	45.22	46.52	34.70	17.16	50.87	8.31
TRG	TRG Pakistan Ltd.	67.47	Sell	Sell	54.58	66.76	66.06	68.21	68.96	61.50	58.84	83.15	44.03

Today's AI Generated Signal

AIRLINK - Air Link Communication Ltd

Signal: Sell

Signal Rate: 193.77

Next Signal: Buy When Price Closes Above 202

DGKC - D. G. Khan Cement Company Ltd.

Signal: Sell

Signal Rate: 105.37

Next Signal: Buy When Price Closes Above 109.3

MEBL - Meezan Bank Ltd.

Signal: Sell

Signal Rate: 241.94

Next Signal: Buy When Price Closes Above 246

MLCF - Maple Leaf Cement Factory Ltd. Consolidated

Signal: Sell

Signal Rate: 45.57

Next Signal: Buy When Price Closes Above 46.9

MUGHAL - Mughal Iron & Steels Ind. Ltd.

Signal: Sell

Signal Rate: 80.86

Next Signal: Buy When Price Closes Above 82.5

PSO - Pakistan State Oil Company Ltd. Consolidated

Signal: Sell

Signal Rate: 370.43

Next Signal: Buy When Price Closes Above 388.8

SNGP - Sui Northern Gas Pipelines Ltd.

Signal: Sell

Signal Rate: 94.17

Next Signal: Buy When Price Closes Above 101.5

SSGC - Sui Southern Gas Company Ltd.

Signal: Sell

Signal Rate: 39.53

Next Signal: Buy When Price Closes Above 44.89

Standard Capital
Securities (PVT) LTD

"Committed to intelligent investing"

AI Generated Open Positions (All)

AGP - AGP Ltd.

Current Signal State: Buy

Signal Initiated At: 173.49

Signal Initiated On: 13-Jan-25

Current Rate: 184.35

Profit / Loss: 6.26%

Next Signal: (Stop Loss) / Sell When Price Closes Below 181

AIRLINK - Air Link Communication Ltd

Current Signal State: Buy

Signal Initiated At: 200.75

Signal Initiated On: 24-Jan-25

Current Rate: 194.5

Profit / Loss: -3.11%

Next Signal: (Stop Loss) / Sell When Price Closes Below 194.07

ASTL - Amreli Steels Ltd.

Current Signal State: Sell

Signal Initiated At: 24.84

Signal Initiated On: 21-Jan-25

Current Rate: 24.3

Next Signal: Buy When Price Closes Above 26

ATRL - Attock Refinery Ltd.

Current Signal State: Sell

Signal Initiated At: 648.38

Signal Initiated On: 16-Jan-25

Current Rate: 608.95

Next Signal: Buy When Price Closes Above 642

BAHL - Bank AL-Habib Ltd.

Current Signal State: Sell

Signal Initiated At: 133.94

Signal Initiated On: 23-Jan-25

Current Rate: 134.6

Next Signal: Buy When Price Closes Above 135.5

CHCC - Cherat Cement Company Ltd.

Current Signal State: Sell

Signal Initiated At: 256.87

Signal Initiated On: 15-Jan-25

Current Rate: 255.97

Next Signal: Buy When Price Closes Above 265.05

DGKC - D. G. Khan Cement Company Ltd.

Current Signal State: Buy

Signal Initiated At: 99.75

Signal Initiated On: 10-Jan-25

Current Rate: 105.49

Profit / Loss: 5.75%

Next Signal: (Stop Loss) / Sell When Price Closes Below 108

EFERT - Engro Fertilizers Ltd.

Current Signal State: Buy

Signal Initiated At: 223.14

Signal Initiated On: 24-Jan-25

Current Rate: 226.25

Profit / Loss: 1.39%

Next Signal: (Stop Loss) / Sell When Price Closes Below 218.02

ENGRO - Engro Corporation Ltd. Consolidated

Current Signal State: Buy

Signal Initiated At: 435.67

Signal Initiated On: 23-Dec-24

Current Rate: 0

Profit / Loss: -100.00%

Next Signal: (Stop Loss) / Sell When Price Closes Below 474.01

FEROZ - Ferozsons Laboratories Ltd.

Current Signal State: Buy

Signal Initiated At: 334.23

Signal Initiated On: 20-Jan-25

Current Rate: 334.99

Profit / Loss: 0.23%

Next Signal: (Stop Loss) / Sell When Price Closes Below 329

FFC - Fauji Fertilizer Company Ltd. Consolidated

Current Signal State: Buy

Signal Initiated At: 408.06

Signal Initiated On: 24-Jan-25

Current Rate: 409

Profit / Loss: 0.23%

Next Signal: (Stop Loss) / Sell When Price Closes Below 395

GHNI - Ghandhara Industries Ltd.

Current Signal State: Sell

Signal Initiated At: 594.12

Signal Initiated On: 21-Jan-25

Current Rate: 558.37

Next Signal: Buy When Price Closes Above 601.9

GLAXO - Glaxosmithkline (Pak) Ltd.

Current Signal State: Buy

Signal Initiated At: 410.56

Signal Initiated On: 23-Jan-25

Current Rate: 412

Profit / Loss: 0.35%

Next Signal: (Stop Loss) / Sell When Price Closes Below 397

HBL - Habib Bank Ltd.

Current Signal State: Sell

Signal Initiated At: 173.05

Signal Initiated On: 08-Jan-25

Current Rate: 174.1

Next Signal: Buy When Price Closes Above 176

HCAR - Honda Atlas Cars (Pakistan) Ltd.

Current Signal State: Sell

Signal Initiated At: 305.55

Signal Initiated On: 23-Jan-25

Current Rate: 303.05

Next Signal: Buy When Price Closes Above 309.93

INIL - International Industries Ltd. Consolidated

Current Signal State: Sell

Signal Initiated At: 170.92

Signal Initiated On: 16-Jan-25

Current Rate: 161.1

Next Signal: Buy When Price Closes Above 171.8

ISL - International Steels Ltd.

Current Signal State: Sell

Signal Initiated At: 94.96

Signal Initiated On: 16-Jan-25

Current Rate: 90.14

Next Signal: Buy When Price Closes Above 93

LUCK - Lucky Cement Ltd. Consolidated

Current Signal State: Sell

Signal Initiated At: 1101.48

Signal Initiated On: 21-Jan-25

Current Rate: 1110

Next Signal: Buy When Price Closes Above 1119

MCB - MCB Bank Ltd.

Current Signal State: Buy

Signal Initiated At: 287.32

Signal Initiated On: 30-Dec-24

Current Rate: 283

Profit / Loss: -1.50%

Next Signal: (Stop Loss) / Sell When Price Closes Below 280.05

MEBL - Meezan Bank Ltd.

Current Signal State: Buy

Signal Initiated At: 236.59

Signal Initiated On: 13-Jan-25

Current Rate: 242

Profit / Loss: 2.29%

Next Signal: (Stop Loss) / Sell When Price Closes Below 242

MLCF - Maple Leaf Cement Factory Ltd. Consolidated

Current Signal State: Buy

Signal Initiated At: 46.31

Signal Initiated On: 20-Jan-25

Current Rate: 45.5

Profit / Loss: -1.75%

Next Signal: (Stop Loss) / Sell When Price Closes Below 46.31

MUGHAL - Mughal Iron & Steels Ind. Ltd.

Current Signal State: Buy

Signal Initiated At: 81.8

Signal Initiated On: 24-Jan-25

Current Rate: 81

Profit / Loss: -0.98%

Next Signal: (Stop Loss) / Sell When Price Closes Below 81.01

NCL - Nishat Chunian Ltd.

Current Signal State: Sell

Signal Initiated At: 32.79

Signal Initiated On: 09-Jan-25

Current Rate: 31.65

Next Signal: Buy When Price Closes Above 32.98

NETSOL - Netsol Technology Ltd.

Current Signal State: Buy

Signal Initiated At: 158.19

Signal Initiated On: 14-Jan-25

Current Rate: 156.5

Profit / Loss: -1.07%

Next Signal: (Stop Loss) / Sell When Price Closes Below 154.5

NML - Nishat Mills Ltd. Consolidated

Current Signal State: Sell

Signal Initiated At: 104.56

Signal Initiated On: 08-Jan-25

Current Rate: 97

Next Signal: Buy When Price Closes Above 101.99

NRL - National Refinery Ltd.

Current Signal State: Sell

Signal Initiated At: 281.03

Signal Initiated On: 16-Jan-25

Current Rate: 248

Next Signal: Buy When Price Closes Above 272.4

OCTOPUS - Octopus Digital Limited

Current Signal State: Sell

Signal Initiated At: 65.34

Signal Initiated On: 22-Jan-25

Current Rate: 65.1

Next Signal: Buy When Price Closes Above 68.64

OGDC - Oil & Gas Development Company Ltd.

Current Signal State: Buy

Signal Initiated At: 224.96

Signal Initiated On: 10-Jan-25

Current Rate: 209.05

Profit / Loss: -7.07%

Next Signal: (Stop Loss) / Sell When Price Closes Below 209.09

PIOC - Pioneer Cement Ltd.

Current Signal State: Sell

Signal Initiated At: 198.82

Signal Initiated On: 03-Jan-25

Current Rate: 185

Next Signal: Buy When Price Closes Above 195.2

POL - Pakistan Oilfields Ltd.

Current Signal State: Sell

Signal Initiated At: 623.42

Signal Initiated On: 19-Dec-24

Current Rate: 643

Next Signal: Buy When Price Closes Above 663

PPL - Pakistan Petroleum Ltd.

Current Signal State: Sell

Signal Initiated At: 190.86

Signal Initiated On: 15-Jan-25

Current Rate: 178.06

Next Signal: Buy When Price Closes Above 185.1

PRL - Pakistan Refinery Ltd.

Current Signal State: Sell

Signal Initiated At: 41.27

Signal Initiated On: 21-Jan-25

Current Rate: 38.9

Next Signal: Buy When Price Closes Above 43.58

PSMC - Pak Suzuki Motor Company Ltd.

Current Signal State: Buy

Signal Initiated At: 609.14

Signal Initiated On: 22-Feb-24

Current Rate: 0

Profit / Loss: -100.00%

Next Signal: (Stop Loss) / Sell When Price Closes Below 609

PSO - Pakistan State Oil Company Ltd. Consolidated

Current Signal State: Buy

Signal Initiated At: 384.52

Signal Initiated On: 23-Jan-25

Current Rate: 368.5

Profit / Loss: -4.17%

Next Signal: (Stop Loss) / Sell When Price Closes Below 382

SAZEW - Sazgar Engineering Works Ltd.

Current Signal State: Sell

Signal Initiated At: 1028.34

Signal Initiated On: 21-Jan-25

Current Rate: 976

Next Signal: Buy When Price Closes Above 1020

SEARL - The Searl Company Ltd. Consolidated

Current Signal State: Buy

Signal Initiated At: 106.84

Signal Initiated On: 23-Jan-25

Current Rate: 106.13

Profit / Loss: -0.66%

Next Signal: (Stop Loss) / Sell When Price Closes Below 105.5

SHEL - Shell Pakistan Ltd.

Current Signal State: Sell

Signal Initiated At: 203.03

Signal Initiated On: 16-Jan-25

Current Rate: 179

Next Signal: Buy When Price Closes Above 195.66

SNGP - Sui Northern Gas Pipelines Ltd.

Current Signal State: Buy

Signal Initiated At: 99.6

Signal Initiated On: 24-Jan-25

Current Rate: 94.7

Profit / Loss: -4.92%

Next Signal: (Stop Loss) / Sell When Price Closes Below 95.5

SSGC - Sui Southern Gas Company Ltd.

Current Signal State: Buy

Signal Initiated At: 43.92

Signal Initiated On: 24-Jan-25

Current Rate: 39.53

Profit / Loss: -10.00%

Next Signal: (Stop Loss) / Sell When Price Closes Below 40.4

SYS - Systems Ltd.

Current Signal State: Buy

Signal Initiated At: 575.48

Signal Initiated On: 14-Jan-25

Current Rate: 600

Profit / Loss: 4.26%

Next Signal: (Stop Loss) / Sell When Price Closes Below 556

TRG - TRG Pakistan Ltd.

Current Signal State: Sell

Signal Initiated At: 66.6

Signal Initiated On: 21-Jan-25

Current Rate: 65.25

Next Signal: Buy When Price Closes Above 67.49

UBL - United Bank Ltd.

Current Signal State: Sell

Signal Initiated At: 392.38

Signal Initiated On: 21-Jan-25

Current Rate: 385.51

Next Signal: Buy When Price Closes Above 393.95

Standard Capital
Securities (PVT) LTD
"Committed to intelligent investing"

Glossary of Terms

Support: Support is the level at which the stock is likely to see increased interest from buyers. The buying support will prevent the stock from falling further.

Resistance: Resistance is the level at which the stock is likely to see increased interest from sellers. The selling pressure will prevent the stock from rising further.

RSI: The Relative Strength Index (RSI) is a momentum oscillator that ranges from 0 to 100. It compares the extent of the stock's recent price movements by evaluating recent gains and losses. Stocks with RSI above 70 could be considered overbought, and below 30 could be considered oversold. Generally, if the RSI falls below 70, it is a bearish signal. Conversely, if the RSI of a stock rises above 30 it is considered bullish. The RSI used is of 14 days.

Bollinger Bands: A Bollinger Band, developed by famous technical trader John Bollinger, is plotted two standard deviations away from a simple moving average. BB is a highly popular technical analysis technique. Many traders believe the closer the prices move to the upper band, the more overbought the market, and the closer the prices move to the lower band, the more oversold the market.

MACD: MACD shows the relationship between a longer period moving average and a short period Moving average of a stock's price. Generally, the 26-day exponential moving average (EMA) and the 12-day EMA are used to calculate MACD.

EMA: Exponential moving average (EMA) is the weighted average of the prices of a given security where higher weights are given to recent data points. EMA is used to analyze the trend of a stock.

SMA: A simple moving average (SMA) is the average of the closing price of a security for a given period. The parabolic SAR: is a technical indicator used to determine the price direction of an asset, as well as draw attention to when the price direction is changing. Sometimes known as the "stop and reversal system," the parabolic SAR was developed by J. Welles Wilder Jr., creator of the relative strength index (RSI).

Disclaimer Section

This document has been prepared by technical analysts at Standard Capital Securities (SCS). This document does not constitute an offer or solicitation for the purchase or sale of any security. This publication is intended only for distribution to the clients of the Company who are assumed to be reasonably sophisticated investors that understand the risks involved in investing in equity securities. The information contained herein is based upon publicly available data and sources believed to be reliable. While every care was taken to ensure accuracy and objectivity, SCS does not represent that it is accurate or complete and it should not be relied on as such. In particular, the report takes no account of the investment objectives, financial situation and particular needs of investors. The information given in this document is as of the date of this report and there can be no assurance that future results or events will be consistent with this information. This information is subject to change without any prior notice. SCS reserves the right to make modifications and alterations to this statement as may be required from time to time. However, SCS is under no obligation to update or keep the information current. SCS is committed to providing independent and transparent recommendation to its client and would be happy to provide any information in response to specific client queries. Past performance is not necessarily a guide to future performance. This document is provided for assistance only and is not intended to be and must not alone be taken as the basis for any investment decision. The user assumes the entire risk of any use made of this information. Each recipient of this document should make such investigation as it deems necessary to arrive at an independent evaluation of an investment in the securities of companies referred to in this document (including the merits and risks involved), and should consult his or her own advisors to determine the merits and risks of such investment. SCS or any of its affiliates shall not be in any way responsible for any loss or damage that may be arise to any person from any inadvertent error in the information contained in this report.